



Instinct Guides You



Sea Clover Lane, Wyke Regis, Weymouth Offers In Excess Of £425,000

- Close To Coastal Path & Scenic Walks
- Off Road Parking
- Superbly Presented Throughout
- Three Double Bedrooms
- Family Bathroom + En-suite & Cloakroom
- South Westerly Aspect Garden
- No Onward Chain - Flexible Completion Dates
- Modern Energy Efficient



Registration No. 08079158 Directors Mr Wilson, Mr Tominey

Courtesy Notice Upon using WilsonTominey as selling agents ensure we are made aware of contractual obligations you may be under. We can then proceed accordingly.

WilsonTominey Ltd
15 Westham Rd.
DT4 8NS

T 01305 775500
E sales@wilsontominey.co.uk
W www.wilsontominey.co.uk



Wilson Tominey are delighted to present this superbly maintained and generously proportioned three-bedroom home, set within an attractive modern development bordering the iconic Fleet Lagoon and coastal path. The property offers three double bedrooms, a beautiful open-plan kitchen/living space, off-road parking and a low-maintenance south-westerly garden. Offered with no onward chain.

Inside, the hub of the home is the spacious open-plan kitchen/living area. Finished to a high standard throughout, the room enjoys ample fitted cabinetry, a central island providing additional storage and a natural focal point, and a range of integral appliances. The living area is large enough to accommodate various furniture layouts, with double doors that seamlessly connect the home to the garden.

A separate utility room provides excellent practicality with further storage, space for white goods and rear access. A cloakroom completes the ground floor.

To the first floor are three double bedrooms and the family bathroom. Bedroom one is a generous room with plenty of space for furnishings and benefits from a beautifully finished en-suite shower room with decorative tiling, along with distant sea views. Bedrooms two and three are also comfortable doubles. The family bathroom is a standout feature—spacious enough to accommodate both a bath and separate shower cubicle, offering a refined and timeless feel.

The rear garden enjoys a sunny south-westerly aspect and has been designed with low maintenance in mind. A rear gate leads directly to the parking area.

Location

The property sits within a development of just 38 attractive homes. Bordering the historic Fleet Lagoon, it occupies a superb position with coastal walks moments away. Chesil Beach, Weymouth Town Centre and the vibrant harbourside are all within easy reach.



Lounge 14'9" x 13'9" (4.52 x 4.20)

Kitchen 16'0" x 16'0" (4.90 x 4.90)

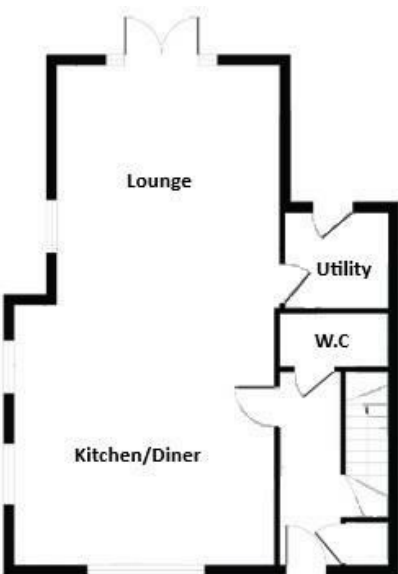
Utility Room 5'10" x 5'10" (1.80 x 1.80)

Cloakroom 6'8" x 3'3" (2.04 x 1.00)

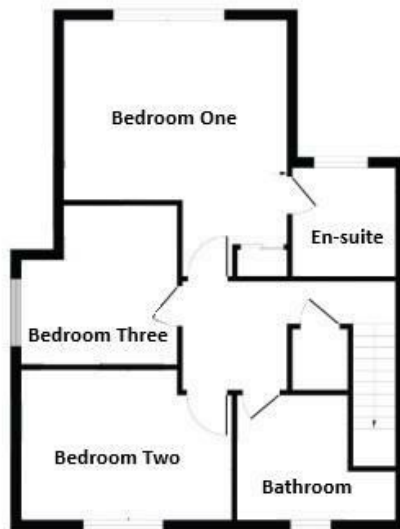
Bedroom One 13'9" x 10'9" (4.20 x 3.29)

Bedroom Two 12'11" x 9'3" (3.96 x 2.83)

Bedroom Three 9'10" x 9'7" (3.00 x 2.93)



Ground Floor
Approximate Floor Area
614sq. ft
(57.03 sq. m)



First Floor
Approximate Floor Area
614 sq. ft
(57.03 sq. m)

Energy Efficiency Rating		Current	Potential
Very energy efficient - lower running costs			
(92 plus)	A		94
(81-91)	B	85	
(69-80)	C		
(55-68)	D		
(39-54)	E		
(21-38)	F		
(1-20)	G		
Not energy efficient - higher running costs			
England & Wales		EU Directive 2002/91/EC	

Environmental Impact (CO ₂) Rating		Current	Potential
Very environmentally friendly - lower CO ₂ emissions			
(92 plus)	A		
(81-91)	B		
(69-80)	C		
(55-68)	D		
(39-54)	E		
(21-38)	F		
(1-20)	G		
Not environmentally friendly - higher CO ₂ emissions			
England & Wales		EU Directive 2002/91/EC	

Important Notice: Particulars are prepared for marketing purposes only and should not be treated as a statement of the condition of any building, fixture or appliance. All measurements, floor plans and lease/ maintenance are approximate and not to be relied upon. Purchasers should make their own checks before relying on any of the information provided herein. * For double glazing and gas radiator heating, it is where specified.